

Networking out of the Box

The days of personal computers being used strictly for personal productivity has come to an end. Virtually every computer is now part of a network which at some point connects to the Internet.

The days of computers being tied to a desktop has also come to an end. Computers are now finding their way into automobiles, buses, trains, and even airplanes. Technologies such as GPRS, WIFI, Bluetooth, and two-way satellite are making it possible to provide networking to even the most remote locations on the planet.

NorhTec builds computers for the new world of computing. All NorhTec Products are designed to make networking simple. The goal is to make connecting computers to a network as easy as hooking up a telephone.

NorhTec has created a family of devices that can be used as building blocks to create networks without boundaries.

The most basic building block is the NorhTec Microserver. NorhTec Microservers are about the size of a paperback book ,but perform the same tasks as much larger computers. NorhTec Microservers use very little power compared to traditional computers. NorhTec Microservers are x86 compatible so existing software can run without modification.

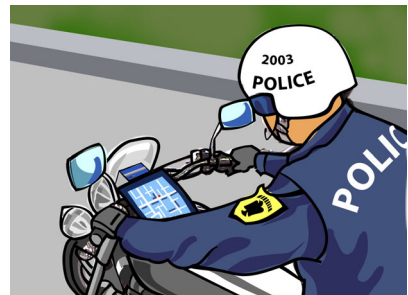
NorhTec Microservers are semi-rugged making them ideal for applications that are not suitable for traditional computers, such as desktops PCs, PDAs or laptops. NorhTec Microservers use massive heatsinks instead of fans. Fans are cheap, noisy, and unreliable. Heatsinks are expensive, never go bad and are silent.



NorhTec Microservers can be deployed for many applications where traditional computers cannot. NorhTec Microservers make possible what was impossible until now.



Oil and Gas



Law Enforcement



Transportation



Defense

Products

NorhTec is a computer company. The products that NorhTec designs and builds are products providing new capabilities and features required for the new generation of network computing. The new generation is more mobile, easier to use, more manageable, and more ubiquitous than the past generation. The new generation is focused on creating highly effective teams and supporting interactive groups rather than simply making the individual more productive.

The new generation of network computing requires devices that are smaller, more energy efficient, more rugged, less expensive, and better integrated.

The Microserver GP is our most energy efficient server. With as little as three to seven watts, it is now possible to set up a firewall, gateway, router, web server, mail server, print server, application server or dedicated standalone embedded system. The Microserver GP makes it practical to deploy dedicated devices such as kiosks, ATM, or smart pay phones than traditional embedded solutions.

The Microserver GP+ adds multimedia features such as video in, video out, support for a second XVGA monitor, and sound in and out. The Microserver GP+ can be used for biometrics, video teleconferencing, surveillance, motion detection, intrusion detection or portable multimedia solutions. The Microserver GP and GP plus are far less expensive than laptops, much more powerful than PDAs, and more practical than PCs for a variety of applications.

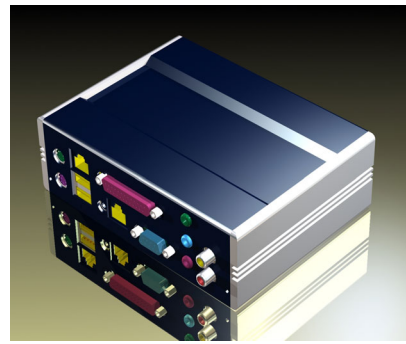
The Microserver High Performance (HP) is powerful enough to deploy applications on Microsoft Windows 2000® or Microsoft Windows XP®. The Microserver HP is the ideal platform for deploying applications that traditionally required large and bulky desktops in a form factor that is small enough to fit into the most compact spaces. The Microserver HP consumes only 12.5 to 15 watts.

The Silent Server is a desktop computer that takes up far less space and uses far less energy than traditional desktops. The Silent server is semi-rugged and has no fans. This means that the Silent Server operates silently (other than the sound of the disk drives). The Silent Server uses standard sized drives making it very easy to configure the Silent Server for a variety of purposes.

The Panda PC is NorhTec's answer to making the desktop friendly. The Panda PC is one of the most energy efficient desktops on the planet. The Panda PC features the most advanced interfaces including firewire and USB 2.0. The Panda PC is one of the best integrated platforms for multimedia. It includes integrated MPEG II, six channel sound, video out, SPDIF output, and integrated DVD/CDRW combo drive. The Panda PC consumes only 20 watts of power, requires no fans and operates off of both AC or DC power, making it one of the only desktops that can be used in an automobile or from alternative power sources such as batteries or solar power.



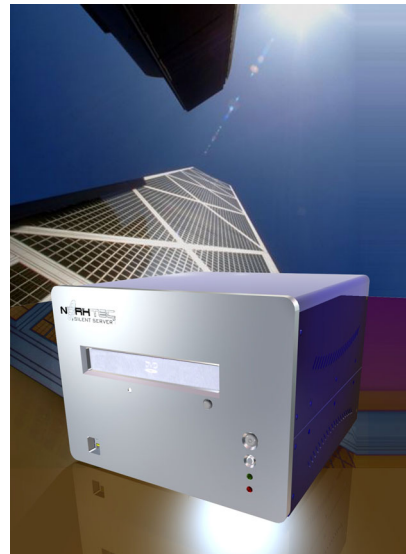
WWW.NORHTEC.COM



Microserver GP/GP+



Microserver HP



Silent Server



Panda PC