

QuickRDP Quick Start Guide

Before You Start

Make sure to get the following items ready before you start deploying Thin Clients that run with QuickRDP:

1. **Remote Desktop Service:**
The target Windows XP Pro or 2003 Server with User (Remote Desktop Service) accounts need to be ready for QuickRDP' access.
2. **DHCP Server:**
The DHCP service is required to assign dynamic IP address to each Thin Client. This service can be provided by Windows 2003 Server, Windows XP Pro, or any Linux Servers.
3. **Network Infrastructure:**
A basic local area network need to be in place: a Ethernet Hub or a Switch with spared ports and cabling.

Step 1

1. Entering the RDP Server IP Address into the last column of the DNS settings under the Server devices that provide the DHCP

2. **Example 1:**

If the IP address of the RDP Server is 192.168.168.12, then enter this IP address into the last column of DNS setting. Here on this screen shot from a 3COM Router, enter into the Secondary DNS Address.

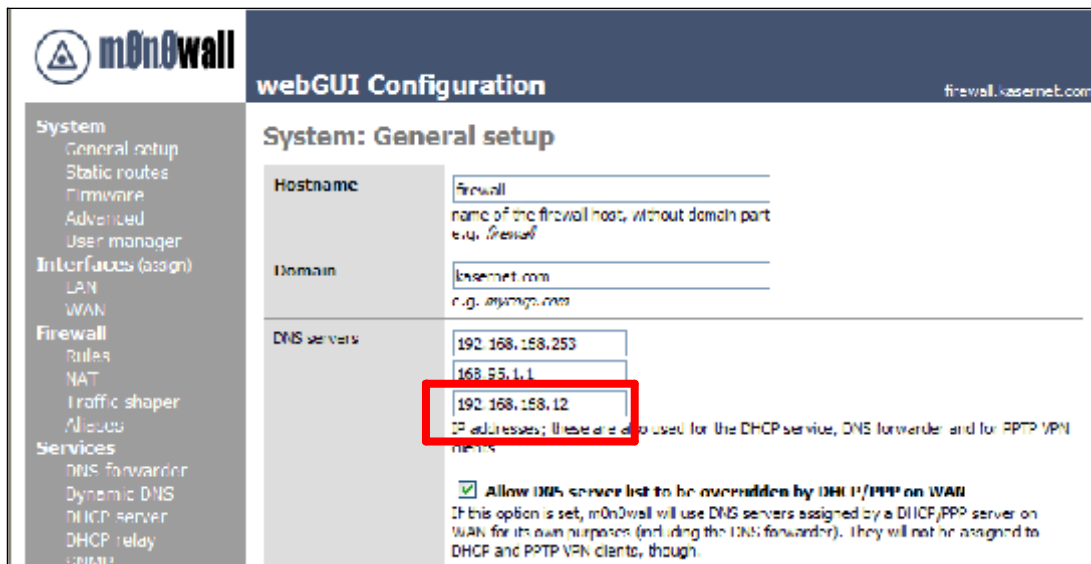
The screenshot shows the 'Internet Settings' page of a 3COM OfficeConnect Wireless 11g Cable/DSL Router. The 'Connection Parameters' section is expanded, showing the following fields:

Connection Parameters	
IP Allocation Mode	Static IP address (to be specified manually)
IP Address	211.21.121.43
Subnet Mask	255.255.255.0
ISP Gateway Address	211.21.121.254
Primary DNS Address	168.95.1.1
Secondary DNS Address	192.168.168.12 (optional)

The 'Secondary DNS Address' field is highlighted with a red box. The left sidebar contains navigation links: Welcome, LAN Settings, Wireless Settings, Internet Settings (selected), Firewall, System Tools, Advanced, Status and Logs, Support/Feedback, and a LOG OUT button.

3. **Example 2:**

In this example, enter the IP address into the 3rd column of the DNS server settings.



4. Example 3:

This example shows a Linux Console for DNS settings of DHCP Server

```

root@fc3_ebony:/etc
[root@fc3_ebony ~]# cd /etc
[root@fc3_ebony etc]# cat dhcpd.conf

#ADSL1
default-lease-time 7200;
max-lease-time 7200;
ddns-update-style none;
option domain-name "kasernet.com";
option subnet-mask 255.255.255.0;

allow booting;
allow bootp;

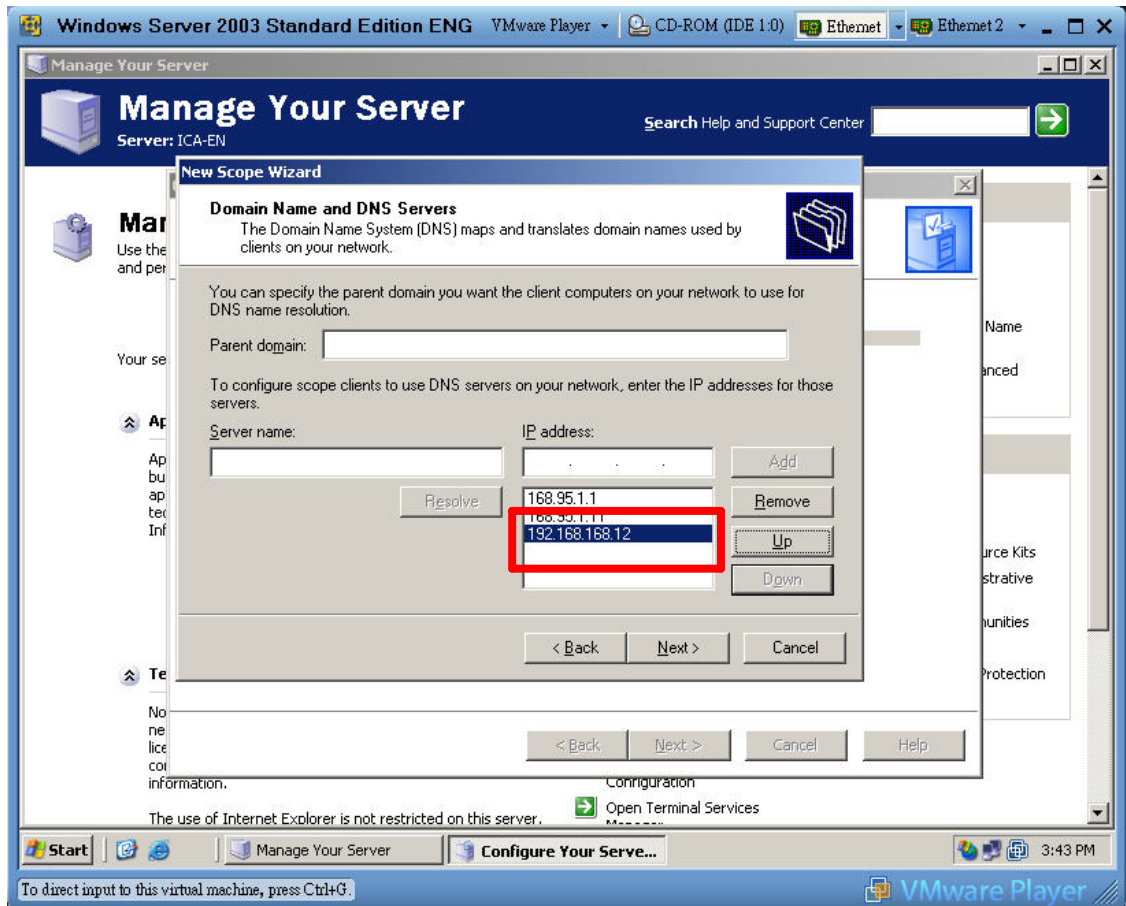
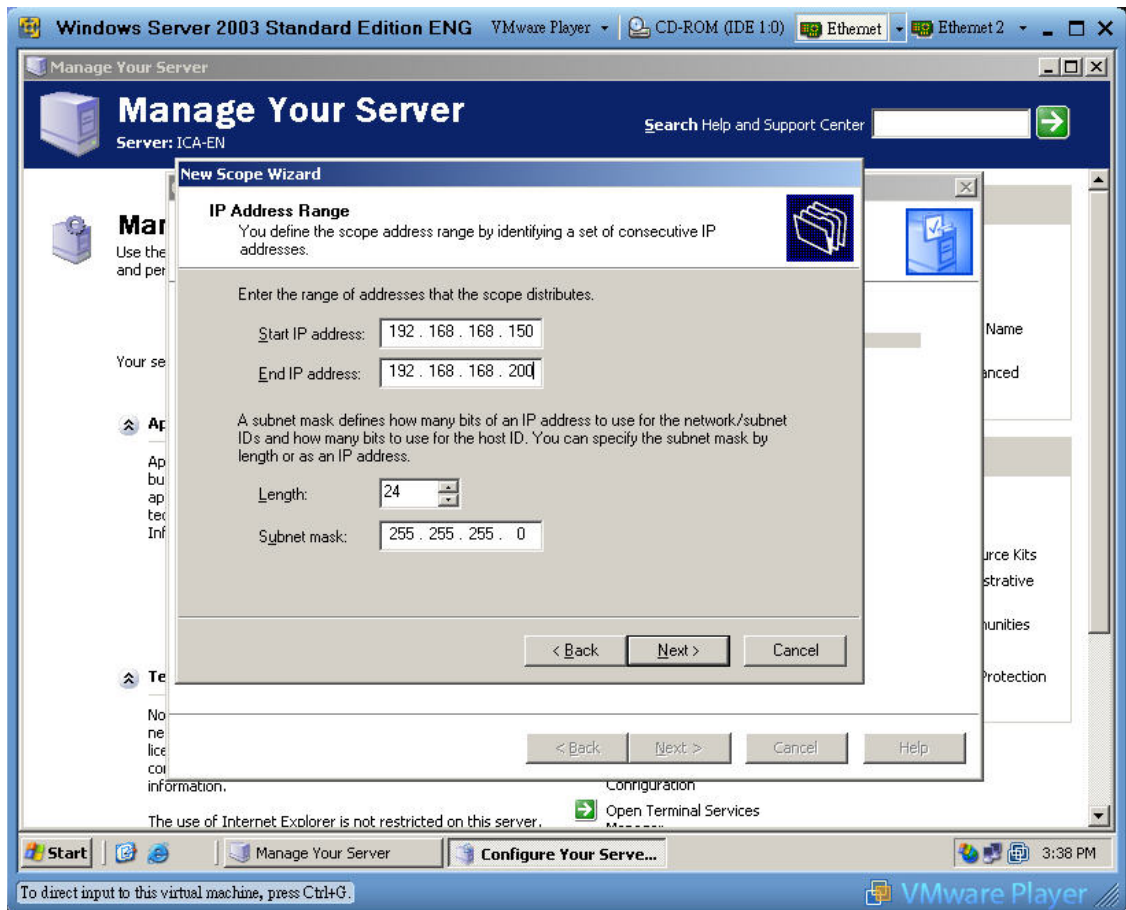
subnet 192.168.168.0 netmask 255.255.255.0 {
    range 192.168.168.150 192.168.168.199;
    option broadcast-address 192.168.168.255;
    option routers 192.168.168.1;
    option domain-name-servers 168.95.1.1, 211.21.121.43, 192.168.168.12;
    option ntp-servers 211.21.121.43;
    next-server 192.168.168.191;
    filename "pxelinux.0";
}

[root@fc3_ebony etc]#

```

5. Example 4:

This example shows a Windows 2003 Server's DNS settings under the DHCP Server Setting Dialogue:



Step 2

1. Plug Display, Keyboard/Mouse, Ethernet Cable, power cord to the Thin Clients that run QuickRDP
2. Turn On Power Switch of Thin Client
3. Wait for system to boot up and to establish connect.

4. Log-on to server with a valid-set of username and password.

Advanced setup

Each QuickRDP can be managed or configured from a remote PC using a Browser such as FireFox or Internet Explorer:

1. Bring up the Browser and type the IP of QuickRDP on the column of URL.
2. Enter the Username and Password. (Factory Defaults is admin/admin)
3. You will enter a Web page with all available menu options to the left of the page.

For Advanced Configuration or Management Tasks, please refer to User Guide for details.